

# IFAD's Development Effectiveness

## HIGHLIGHTS FROM THE 2016 RIDE\*

### Outreach of IFAD-supported projects

#### Rural financial services

**22.2 million**  
voluntary savers

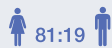


**4 million**  
active borrowers



#### Microenterprises

**1 million**  
people trained in business  
and entrepreneurship



**67,070**  
enterprises accessing business  
development services

#### Natural resource management

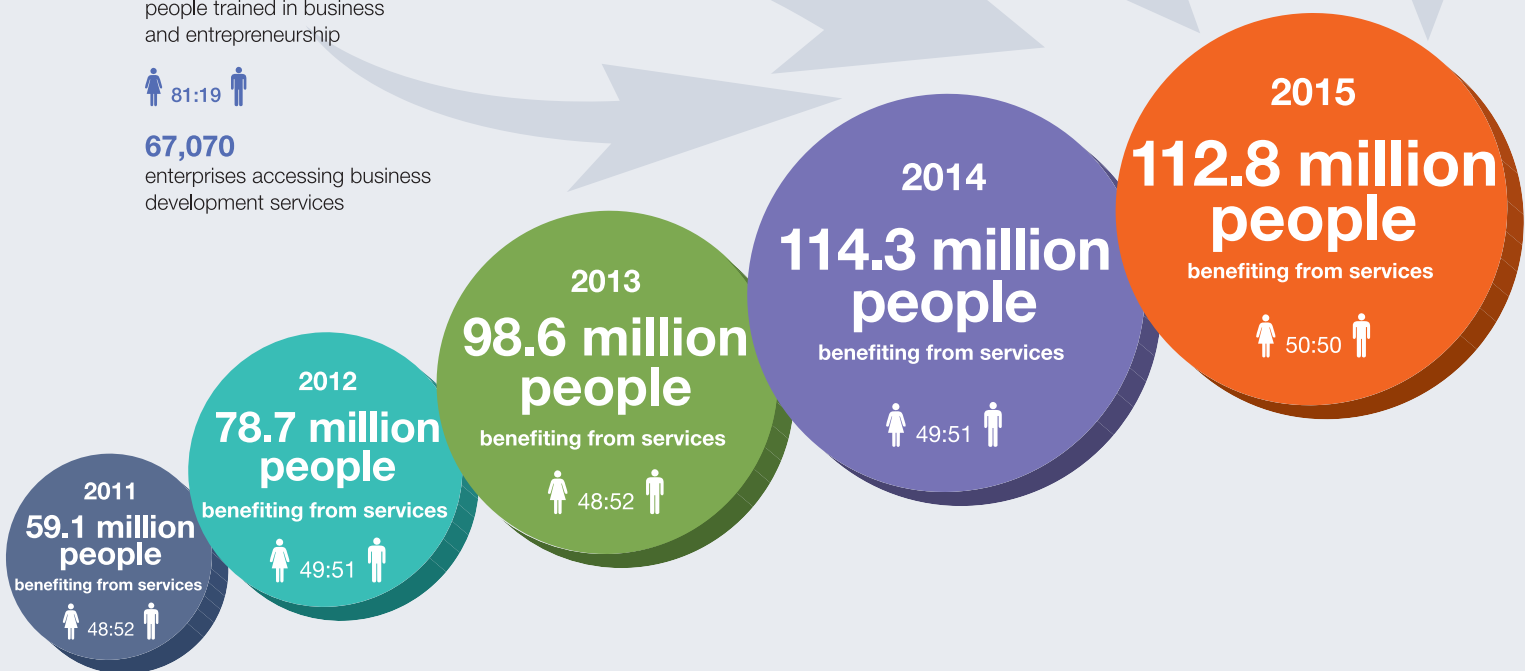
**3.6 million**  
hectares of common-property-resource land  
under improved management practices

**168,000**  
hectares under constructed/rehabilitated  
irrigation schemes

#### Marketing

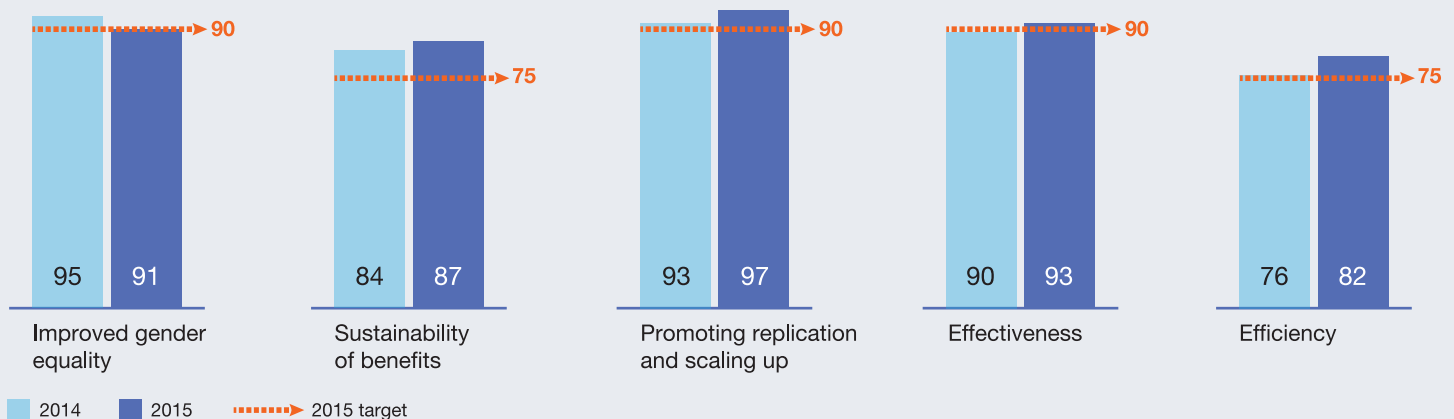
**16,460**  
kilometres of roads  
constructed/rehabilitated

**31,740**  
marketing groups formed/strengthened



### Selected outcome indicators

(percentage of completed projects in the satisfactory zone)



female:male ratio of people receiving services

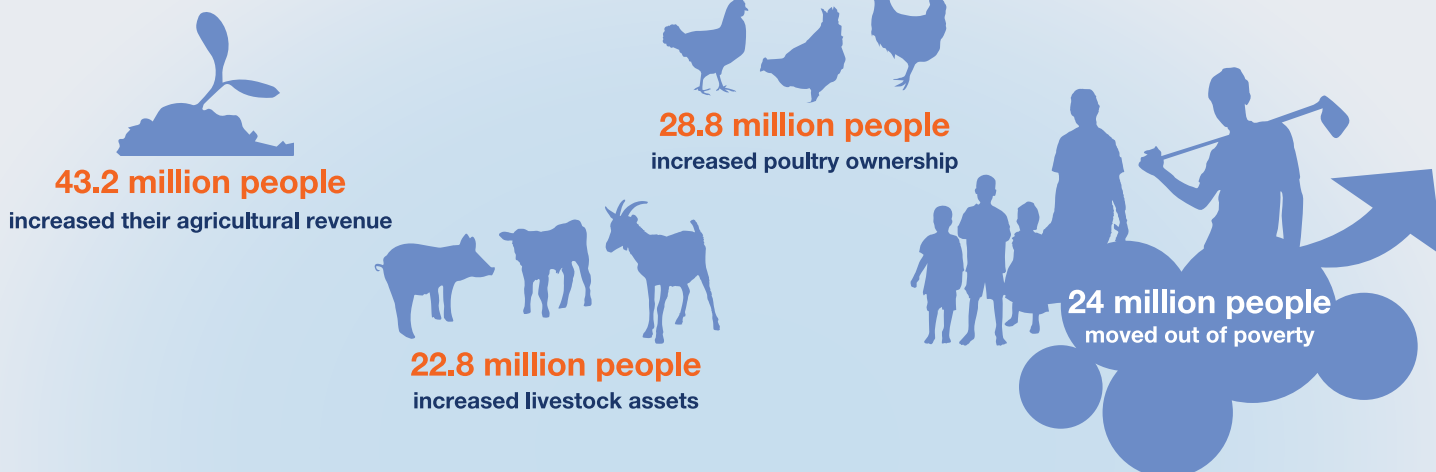
\*Download the full Report on IFAD's Development Effectiveness (RIDE) at <https://webapps.ifad.org/members/eb/118/docs/EB-2016-118-R-8.pdf>

Outreach indicators measure the cumulative number of people receiving services from all ongoing projects. While the different indicators only report the number of participants in a project activity, the total outreach figure includes all direct beneficiaries and members of the same household. Figures reported are for 2015.

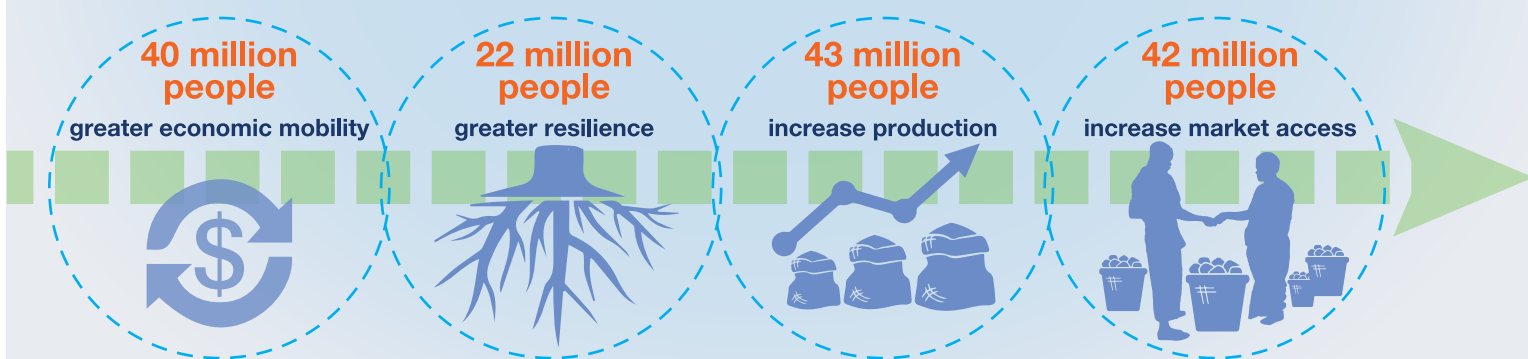
# IFAD'S IMPACT ASSESSMENT INITIATIVE

## Major impact of IFAD-funded projects 2010-2015

IFAD's Impact Assessment Initiative is a necessary effort to rigorously measure the impact of IFAD-funded projects.



## Impact targets for IFAD-funded projects 2016-2018 (IFAD10)



## FUTURE ACTION

IFAD's **Development Effectiveness Framework (DEF)** was launched in 2016 and aims at improving the effectiveness of our operations through:



**Strengthening the focus on generation of results and use of evidence in the project cycle**



**Improving monitoring and evaluation capacity among IFAD staff and in country**



**Linking project monitoring and evaluation to corporate results reporting**

With almost **80%** of the portfolio managed in more than **40 IFAD country offices**, the Fund will now focus on consolidation of management capacities in current country offices to increase development effectiveness.



Investing in rural people

International Fund for Agricultural Development  
Via Paolo di Dono, 44 - 00142 Rome, Italy  
Tel: +39 06 54591 - Fax: +39 06 5043463  
E-mail: ifad@ifad.org  
www.ifad.org

IFAD is an international financial institution and a specialized United Nations agency dedicated to eradicating poverty and hunger in rural areas of developing countries.

## CONTACTS

**Maria Soledad Marco**  
Programming and Resource Officer  
Tel: +39 06 54592654  
E-mail: m.marco@ifad.org

**Jakob Tuborgh**  
Strategic Planning Specialist  
Tel: +39 06 54592469  
E-mail: j.tuborgh@ifad.org