

*The role of ICTs in
generating new data
for evaluations*

Independent Office
of Evaluation



Investing in rural people

**Chitra Deshpande,
Senior Evaluation Officer**

What is New Data

- **Primary data generated from new and existing sources**
- **Existing data mined and analyzed to generate new knowledge for better insights**

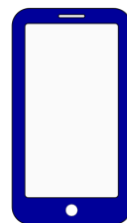
Driver of new data - ICTs



Wireless



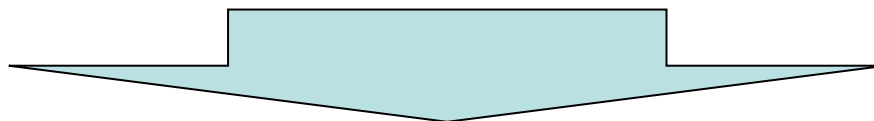
Remote sensing



Mobile collection



Artificial intelligence & machine learning



- Makes real-time data accessible
- Allows access to larger and more reliable data sets that can be analysed faster
- Shortens learning loops making evaluation more efficient and effective

ICT4Eval - Collective experience along the knowledge value chain



Collection

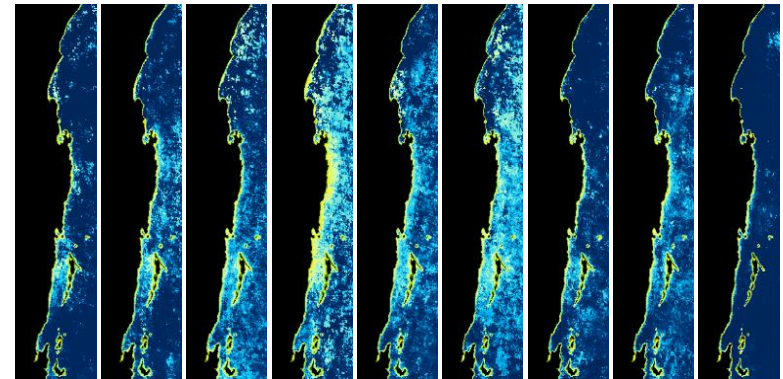
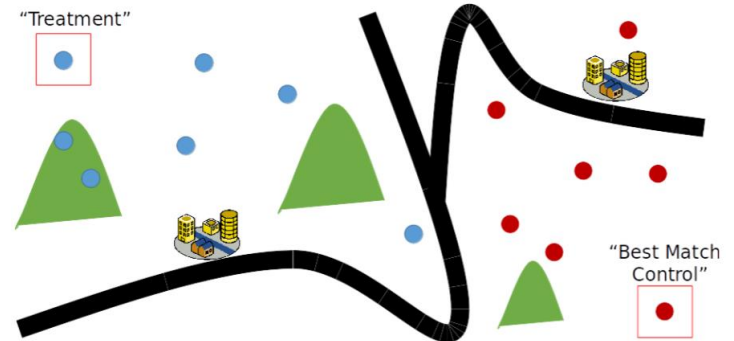
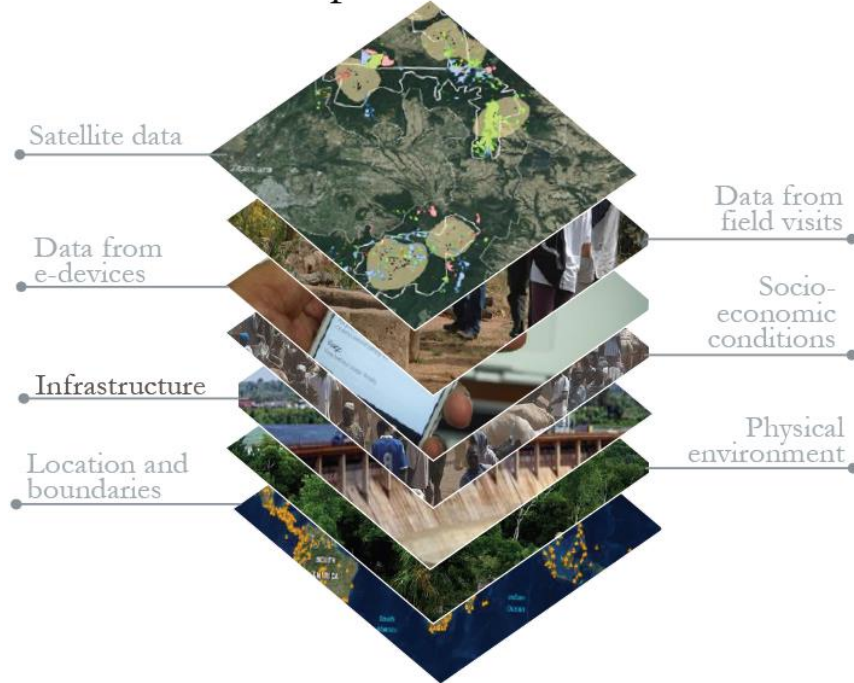
Analysis

Dissemination



Collection: Using Geospatial analysis for impact evaluations

Spatial Model



Analysis: Text mining and Machine learning improve systematic reviews and evidence gap maps



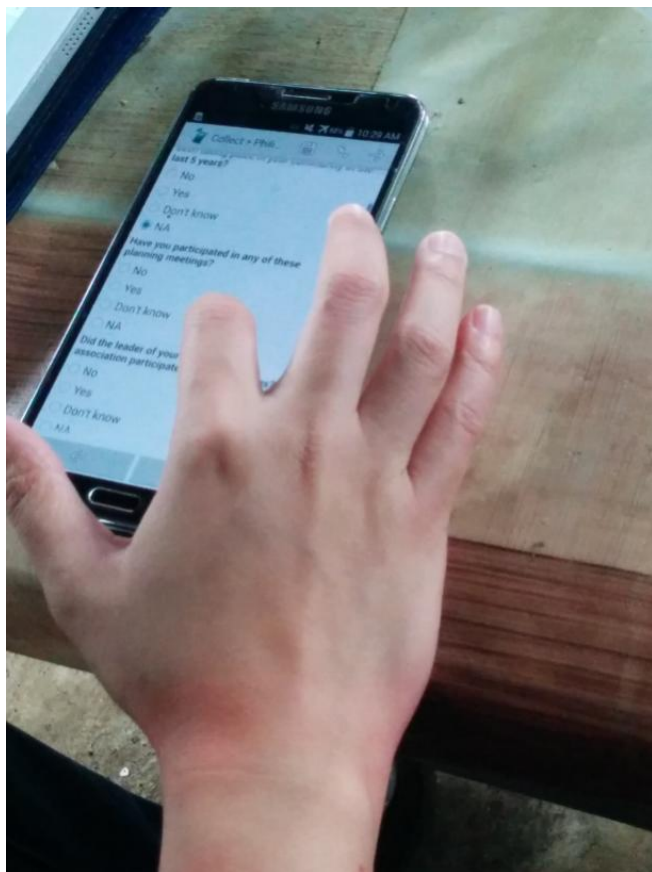
Normally evidence and gap maps takes (1/-month) and systematic reviews 12-24 months + information.

Machine learning process:

- Researchers make first screening
- Machines suggest studies with high probability of inclusion
- Researchers make further screening
- Machines further refine the probabilities
- And so on..



Dissemination: Enabling community participation and validation of digitally collected data through real-time feedback



Lessons learnt and reflections for the future



Behind every data point is a human story

