



Investing in rural people

Independent Office  
of Evaluation

European  
Evaluation  
Society  
Annual  
Conference

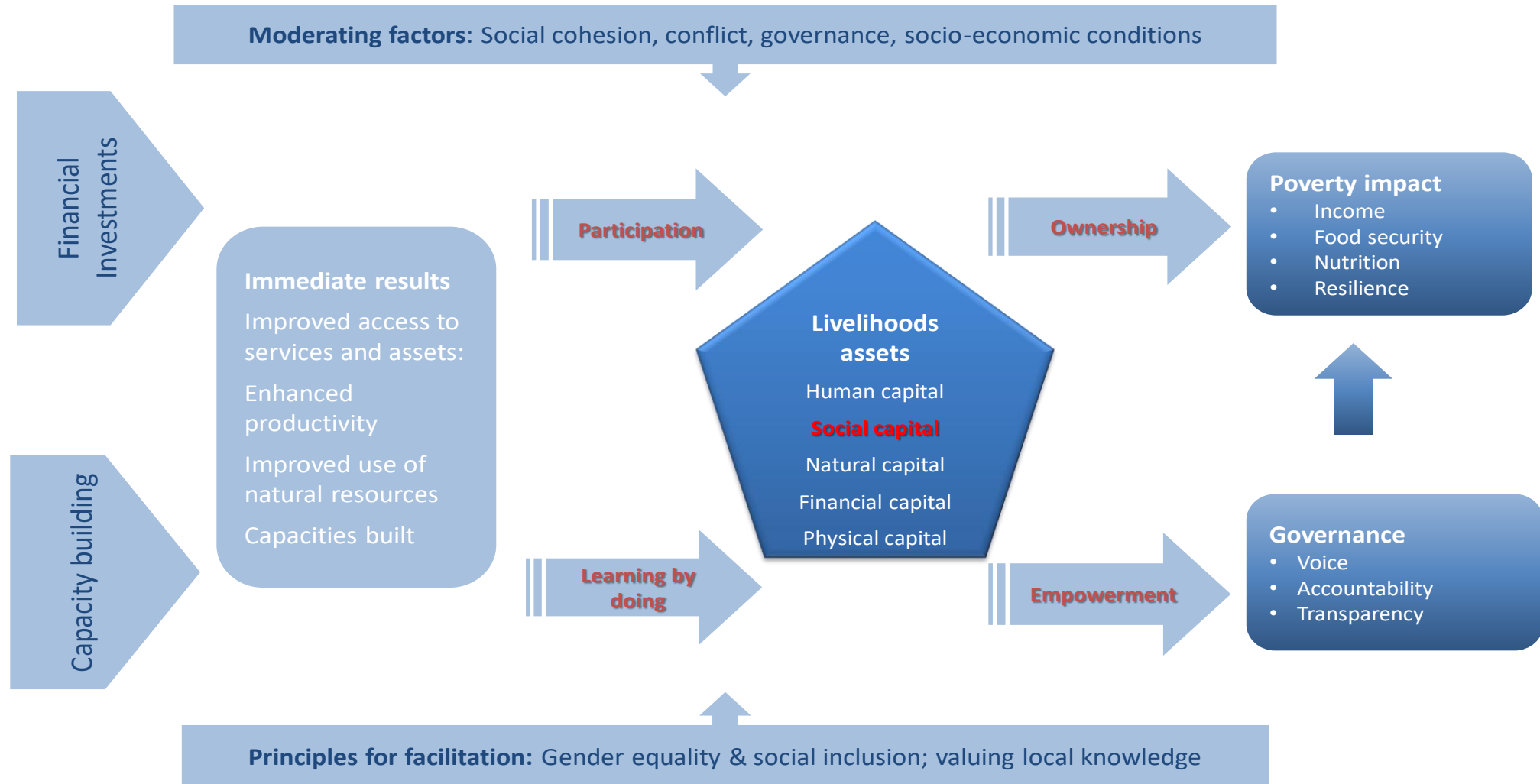


## Measuring what matters

*IFAD evaluation synthesis of community-driven projects*

10 September 2021

# A ToC for community driven development



Source: IFAD Evaluation synthesis CDD, 2020

# How the controversy developed

**2004.** First IFAD Stocktake on CDD (Workshop).

**2005.** World Bank Operations Evaluation Department: Support for CBD and CDD

**2018.** 3ie: CDD - does it build social cohesion or infrastructure?

**2018.** Community-Driven Development: Myths and Realities. Wong; Guggenheim

**2020.** IFAD IOE Evaluation synthesis CDD.

*“Reaffirming values of mutuality could refresh and restore politics, business and the environments in which people live”.*  
(Collier and Kay, “Greed is dead”, 2020)

Better decision making: Participation and deliberation can lead to more trustworthy decisions that people are willing to accept.

*“Hearing the voices of those who are rarely listened to can radically change accepted ideas about what needs to be done.*

Graham Smith, [what-role-should-public-play-covid-19-recovery](#), 23 MAY 2020.

## Objectives

- Consolidate the available evidence on achievements and challenges of community-driven operations in IFAD;
- Identify good practices and lessons for future IFAD.

**Scope:** IOE evaluations from 1982 – 2018

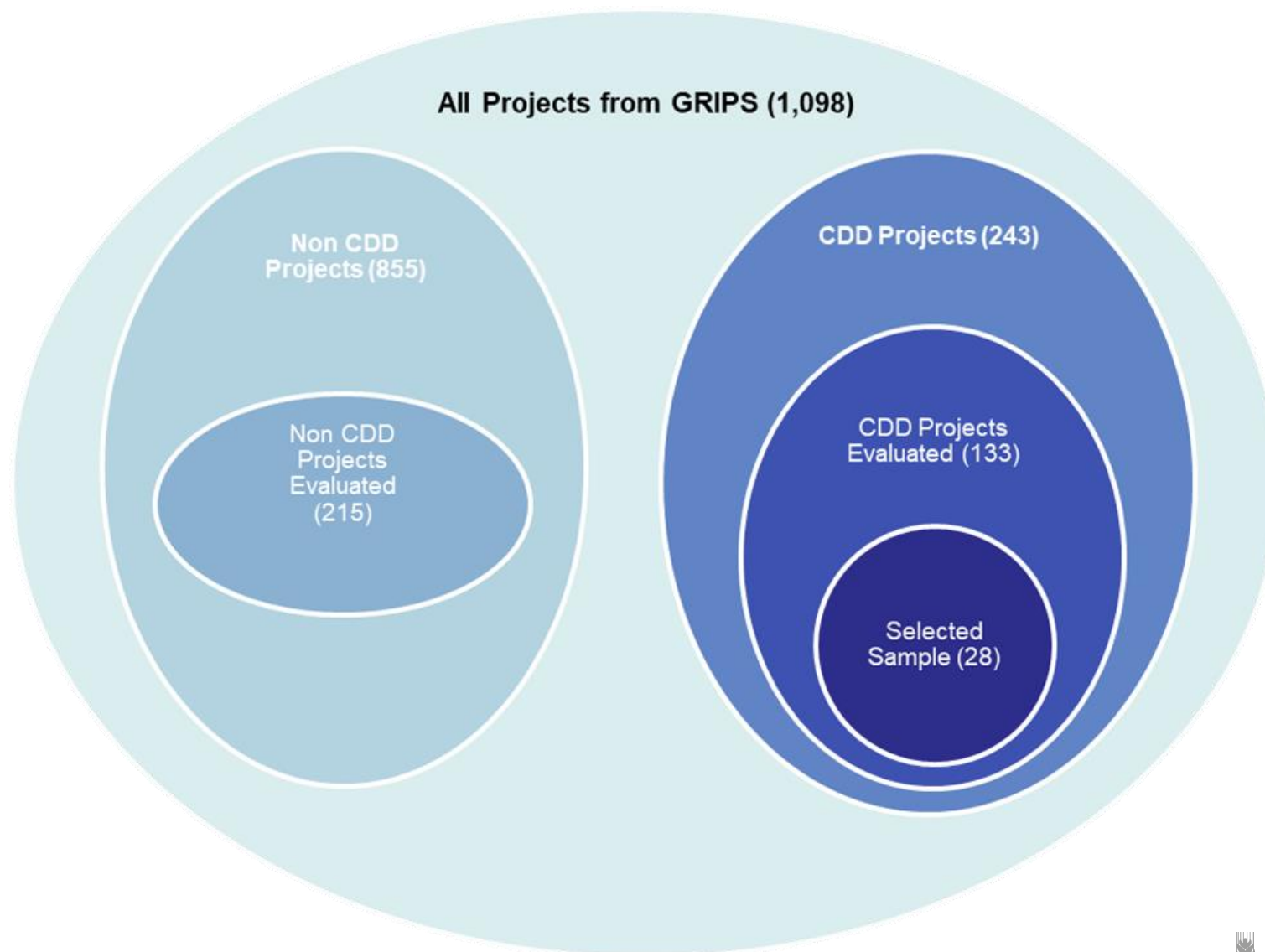
## Limitations:

- Variable understanding and coverage in evaluations
- Desk-based review; context difficult to capture
- Strategic interest and learning often forward oriented;
- Time lag – evidence from closed operations



IFAD projects  
implemented since  
1982

133 CDD projects  
with evaluations



# What is a “community”?

A group of people living in the same place or having a particular characteristic in common (Oxford dictionary)

---

A group of people, with a **collective claim over a territory and recognizing some form of collective governance**; to influence decisions in matters of public choice that affect their livelihood.

*(IFAD CDD Decision Tools)*

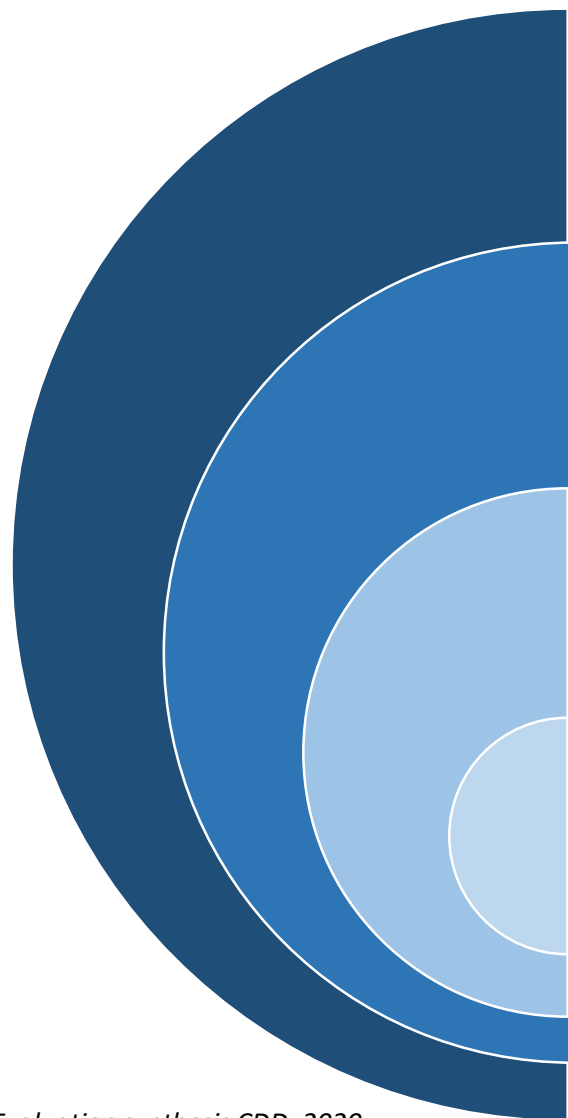
---

**Communities are not homogenous!**

## Examples of “communities” targeted by IFAD

- *Village committees*
- *Community infrastructure committees*
- *Natural resource management committees*
- *Pastoralist communities*
- *Indigenous Peoples intra and inter-tribal coalitions*
- *Farmers’ organizations*
- *Women’s groups*
- *Self-help groups*
- *Savings and credit groups*

# Types of community development



Participatory community development

- Participatory **planning and implementation** of community investments.

Community-based development

- **Communities can influence** the design, implementation and monitoring

Participatory local governance

- **Communities and local government** jointly plan, implement and monitor

Community-driven development

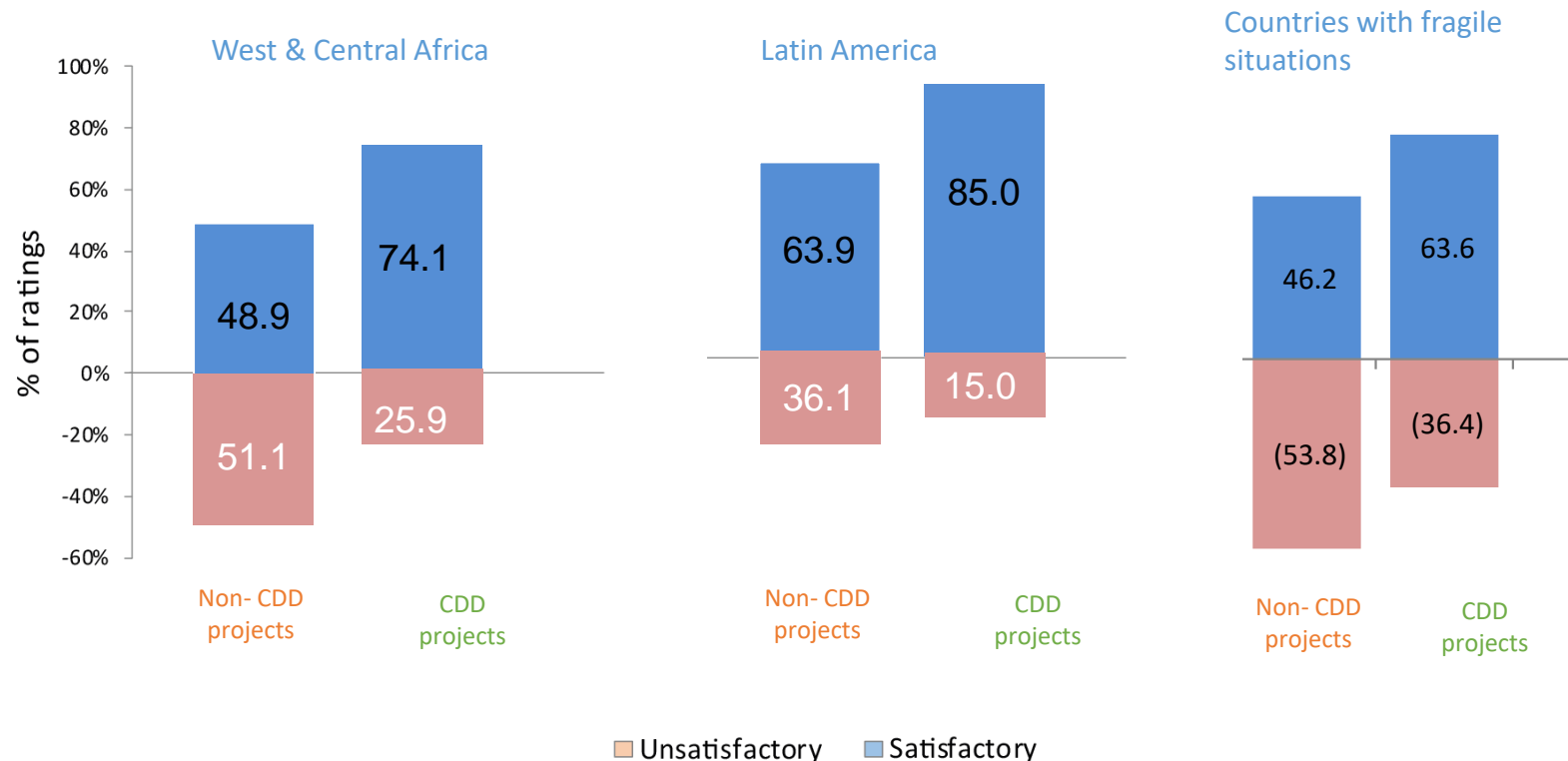
- **Communities decide and manage funds to invest**



# Effectiveness of CDD operations

CDD projects (133) had more satisfactory ratings on effectiveness than non-CDD projects (215): **78%** for CDD against **72%** for non-CDD

BUT: CDD performed much better in some regions and countries



Source: IOE ARRI database

# Social capital in IFAD's CDD operations

## CDD

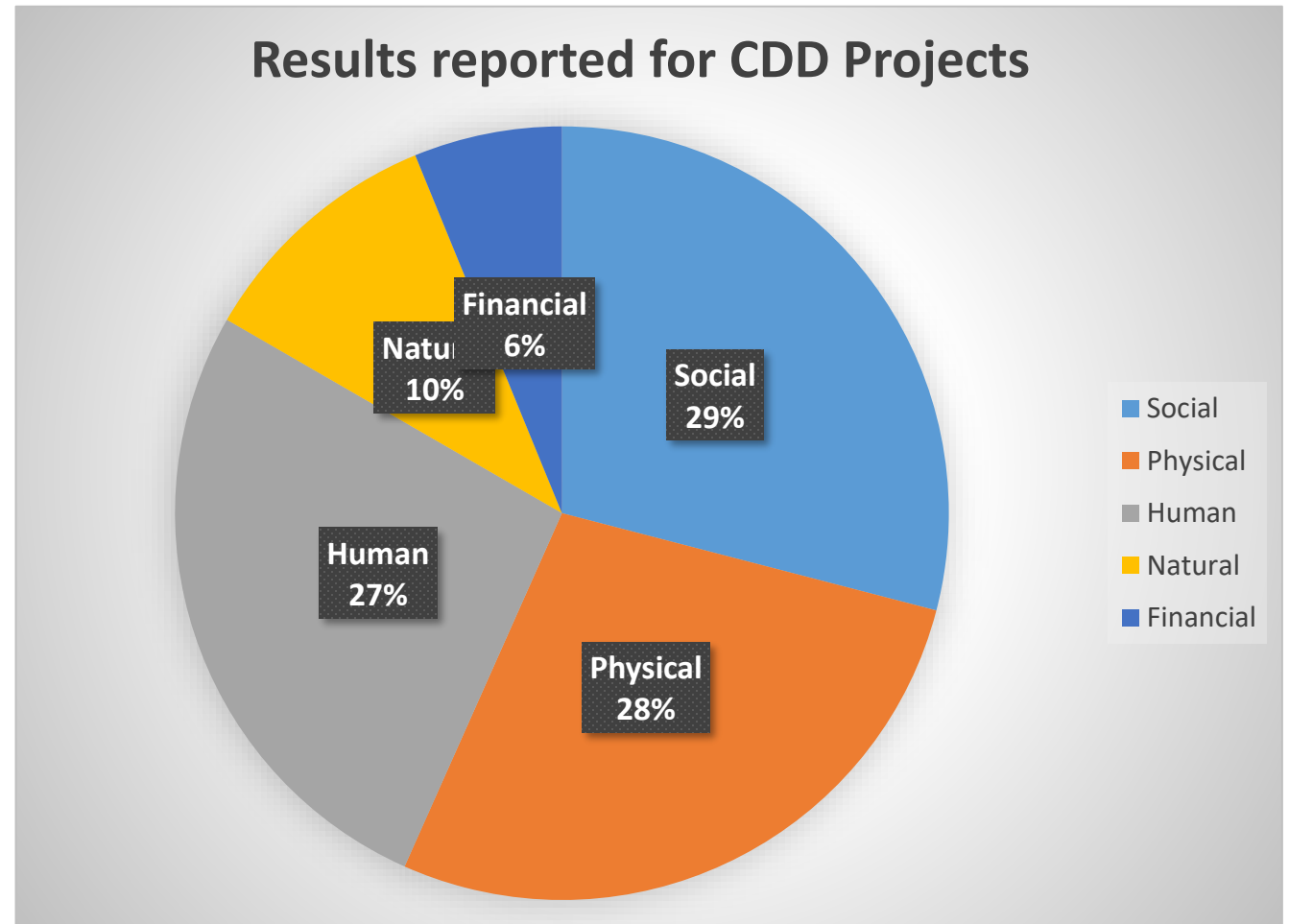
- Involves participatory planning and collective decision making
- Invest in the formation and strengthening of rural institutions

## Social capital

- Reported as important result in CDD projects

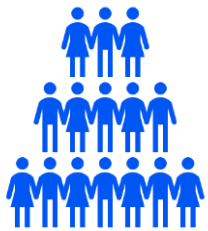
## BUT

- Limited evidence; social capital usually not “unpacked”



Source: Qualitative review of 28 CDD-related projects

## Relevance of CDD



- Local knowledge for local solutions
- Local ownership for sustainability
- Responsive, inclusive and participatory decision-making

## Effectiveness of CDD



- Community development requires strong community structures.
- CDD work better in remote and marginalized areas

## Limited evidence on CDD impact

Limited evidence on social cohesion and social capital  
Building sustainable institutions requires longer-term engagement

***But does this mean that CDD does not work?***