

Key results of PAFA impact assessment

Agricultural Value Chains Support Project

Senegal

Project objectives

To improve the income-earning potential of small-scale family farms through production diversification

Inputs and activities

1. Regressive subsidy and support package to producer organizations (POs)¹
2. Agricultural and management training for PO members
3. Contractual agreements between POs and traders



317
Beneficiary POs



62%
Female beneficiaries



16,035
Beneficiary households



97%
Vulnerable beneficiary households



Storage units built
82



Km of roads rehabilitated or constructed
132.5



Contractual agreements established
313

2010-2016



Millet



Bissap



Niebe



Sesame



Horticulture



Maize

Adoption

+4%

+171%

+43%

No impact

No impact

No impact

Yields

+28%

+37%

+38%

+6%

+40%

No impact

Value of production per year

+73%

+74%

+91%

+11%

+75%

No impact

Market access

Quantity sold per year

+54%

+33%

+19%

+5%

+35%

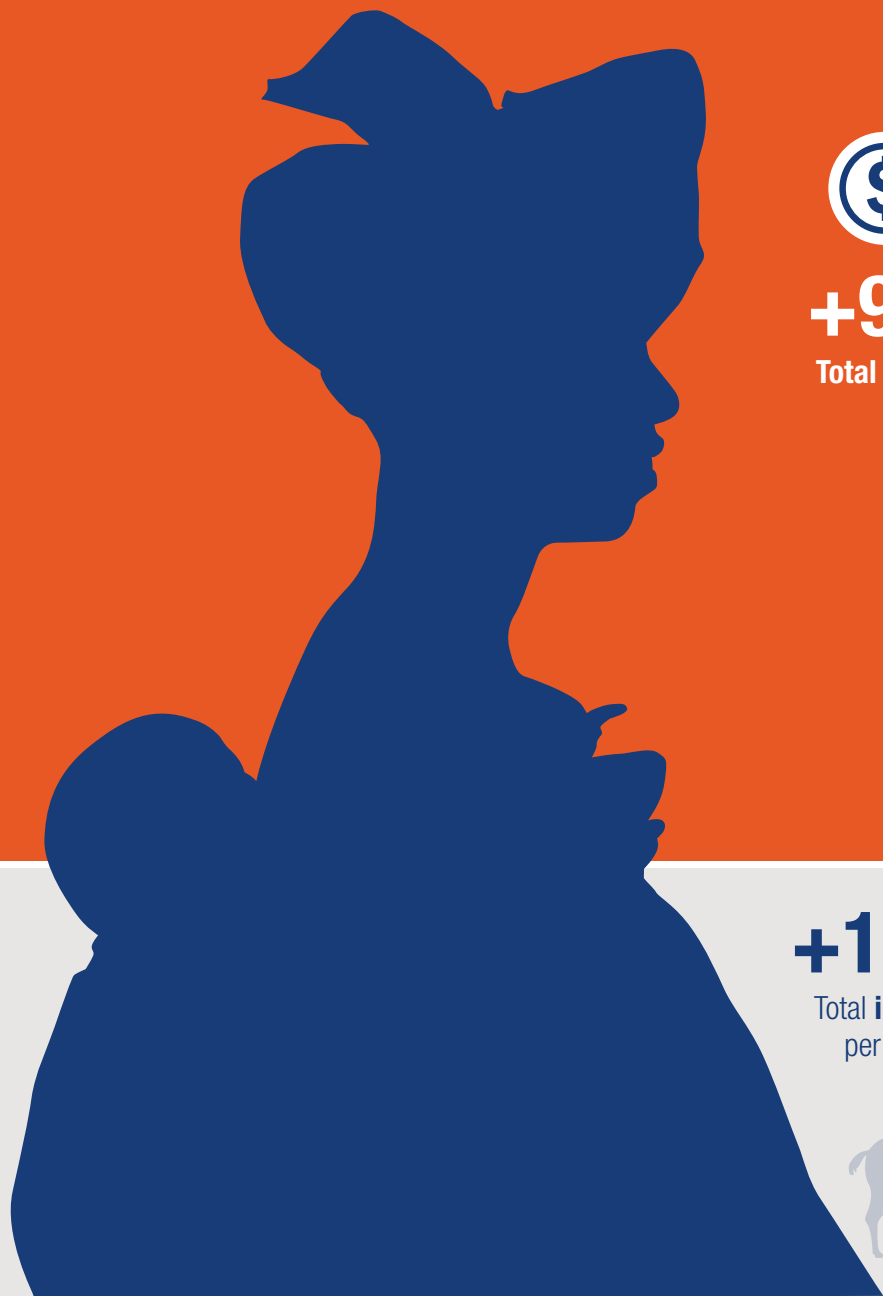
+12%



Investing in rural people

¹ This refers to the Sous Projet d'Accès au Marché (SPAM).

² Asset gains are relative to the control group outside the region.



+9%
Total assets²



+21%
Productive assets²

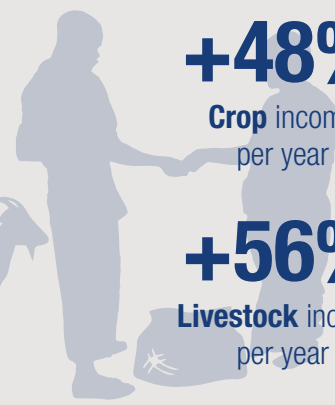


+10%
Housing characteristics²

+11%
Total income
per year

+48%
Crop income
per year

+56%
Livestock income
per year



Lessons learned



Integrated value chain approach

Value chain development projects supporting production and market access are crucial in translating productivity gains into welfare gains.



Effective targeting

Project targeting was successful because gender and youth were integrated at the early stage of the project.



Implementation flexibility

PAFA's success was largely due to its willingness to adapt its implementation plans to match the realities on the ground.



International Fund for Agricultural Development
Via Paolo di Dono, 44 - 00142 Rome, Italy
Tel: +39 06 54591 - Fax: +39 06 5043463
Email: ifad@ifad.org
www.ifad.org

- facebook.com/ifad
- instagram.com/ifadnews
- linkedin.com/company/ifad
- twitter.com/ifad
- youtube.com/user/ifadTV

Contact

Alessandra Garbero
Senior Econometrician
Research and Impact Assessment Division (RIA), IFAD
Email: a.garbero@ifad.org

March 2019