

Key results of Plan VIDA-PEEP impact assessment

Plan VIDA-PEEP to Eradicate Extreme Poverty – Phase I

Bolivia (Plurinational State of)

Project objectives

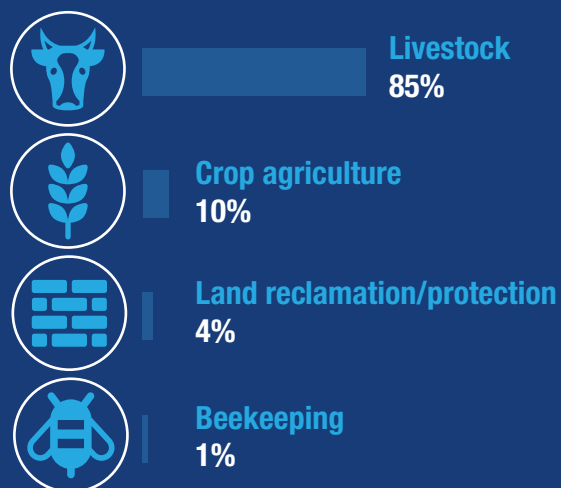
To improve the livelihoods of rural households residing in vulnerable municipalities in the departments of Potosí and Cochabamba

Inputs and activities

1. Financial support for rural development projects
2. Community training and capacity building

 **566**
Proyectos Inter Comunales (PICs)

 **15,756**
Beneficiary households in PICs



2011-2016

Durable assets

+3%

Productive assets

+12%

Agricultural
income per year

+21%

Income
diversification

+4%



Livestock beneficiaries

+24%

Agricultural
income per year

+16%

Value of
animals owned

+5%

Income
diversification

+4%

Dietary
diversity



Number of large and medium
improved livestock

+0.4
Cochabamba

+0.5
Potosí



Households using **livestock protection** and shelter

+21%
Cochabamba

+11%
Potosí

Lessons learned



Focused project logic

The impacts are stronger for livestock projects, likely attributable to a more interlinked logic of intervention.



Social capital drivers

Qualitative evidence suggests social capital was a contributor to the project's success rather than a result.



Livestock and dietary diversity

Supporting the supply of livestock subproducts and households' ability to purchase them can increase dietary diversity.



International Fund for Agricultural Development
Via Paolo di Dono, 44 - 00142 Rome, Italy
Tel: +39 06 54591 - Fax: +39 06 5043463
Email: ifad@ifad.org
www.ifad.org

[facebook.com/ifad](https://www.facebook.com/ifad)
[instagram.com/ifadnews](https://www.instagram.com/ifadnews)
[linkedin.com/company/ifad](https://www.linkedin.com/company/ifad)
twitter.com/ifad
[youtube.com/user/ifadTV](https://www.youtube.com/user/ifadTV)

Contact

Romina Cavatassi
Senior Economist
Research and Impact Assessment Division (RIA), IFAD
Email: r.cavatassi@ifad.org

March 2019