



**Moderator:** Joyce Njoro; Lead Technical Specialist, Nutrition and Social Inclusion, International Fund for Agricultural Development (IFAD)

Joyce Njoro, works at IFAD as the Lead Technical Specialist, Nutrition and Social Inclusion. She leads efforts to mainstream nutrition at IFAD. Prior to joining IFAD in November 2017, she worked in various capacities at global, regional and country level for the Renewed Efforts Against Child Hunger (REACH), hosted by the World Food Programme. Joyce has extensive experience in multi-sectoral nutrition governance; designing frameworks and policies, multi-sectoral coordination, and mainstreaming of nutrition in key sectors especially; Health, Agriculture and Education. She has also immense experience in rural development and community based approaches

Joyce holds a Masters in Rural Sociology and Community Development and a Bachelor of Veterinary Medicine degree, both from the University of Nairobi.



**Keynote Speaker:** Christina Nyhus Dhillon; Senior Technical Specialist at Global Alliance for Improved Nutrition (GAIN)

Christina Nyhus Dhillon is an international public health nutritionist with experience in Latin America, Africa, and South Asia. Her work has been centered around implementing high quality, evidence-based or evidence-generating nutrition programming at the country level. Currently, she leads the Workforce Nutrition Program at GAIN, working with companies in the tea, cocoa, and garment sectors to address nutrition in their workforce.

Christina holds a Ph.D. in International Nutrition from Cornell University, a Master's Degree in International Public health from Emory University, and a Bachelor of Biology and Anthropology from the College of William and Mary in Virginia.

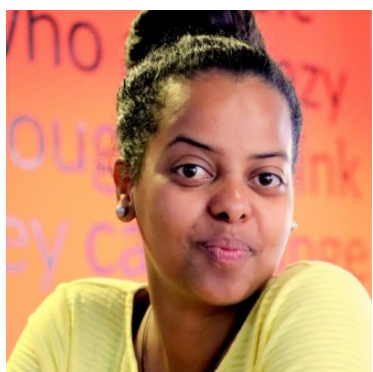


**Panellist:** Tom Anyonge; Acting Director and Lead Technical Specialist (Youth, Rural Development and Institutions) in the Environment, Climate, Gender and Social Inclusion Division at the International Fund for Agricultural Development (IFAD).

Tom Anyonge provides IFAD's regional divisions and country partners with institutional and organizational analysis, capacity development and programme management in the context of farming systems, agricultural support services and markets. He promotes applied research work to fill knowledge gaps and develop knowledge products, tools and guidelines.

Anyonge has 30 years of professional experience strengthening institutions for rural development. Prior to joining IFAD, Anyonge worked with NORAD, FINIDA, DFID and SIDA in Sub-Saharan Africa and Asia. He also has experience as a programme manager, National Technical Adviser, Senior Programme Officer and Senior Programme Support Officer.

Anyonge holds two MSc degrees: one from the University of Arizona, United States, and one from Voronezh University, USSR. He also holds a BSc degree from Voronezh University.



**Panellist:** Betlehem (Betty) Lakew; Act4Food youth advocate, CEO of LeHem Nutrition Counseling, and co-founder of BeNu Foods

Bethlehem Lakew is a professional nutritionist, food scientist, and co-founder of BeNu Foods; a startup biscuit company that aims to produce a healthy, nutritional, and affordable local-based product for the community. Lakew completed her bachelor's degree in Food Science and Applied Nutrition, and her MSc in Food Science and Nutrition at Addis Ababa Science and Technology University with great distinction.

Lakew is the founder and CEO of the Nutrition counseling company LeHem Nutrition Counseling plc. She has also worked as a research Assistant at Addis Ababa Science and Technology University.



**Panellist:** Reema Nanavaty leads Self Employed Women’s Association’s (SEWA) economic and rural development activities reaching out to seventeen million women and their families across India.

Since 1989 she has pioneered revival, restoration, and innovation of rural livelihoods from district to global level. Reema is being recognized across India and in the neighboring countries as a champion of making livelihoods of the poor women reach markets they deserve. May they be women artisans, salt pan workers, farmers, or laborer, she has made efforts over two decades to mainstream amazing diversity of skills and knowledge of India’s citizens into the national mainstream. Her effort has created a more dynamic local economy and fairer and equal society for thousands of SEWA sisters, citizens of India.





**Panellist:** Elvis Beytullayev is a rural economy specialist at the Sectoral Policies Department of the International Labour Organization and is involved in various global and country-level initiatives on the promotion of decent work in rural areas. He leads the ILO’s programme on plantations, which includes, among others, work in Indonesia’s palm oil sector and Malawi’s tea industry. Previously, he served as an External Relations Officer at the ILO’s Partnerships and Development Cooperation Department. Prior to joining the ILO, Mr. Beytullayev worked as a researcher at the NATO Parliamentary Assembly in Brussels, Belgium.



**Panellist:** Dlorah Jenkins Coordinator, Nutrition – CARE USA.

Dlorah Jenkins is an interdisciplinary researcher and development professional with extensive experience in examining the dynamics of health, nutrition, food security, and violent conflict. In her current role, Dlorah’s work centers around supporting the design, implementation, and evaluation of nutrition programming in development settings and integrating nutrition interventions into agriculture, food security, health, and livelihoods programming. She serves as the lead technical advisor for the Philippines-based LOVE Project, which aims to pilot a scalable model of non-communicable disease prevention and management in humanitarian settings, integrating nutrition interventions and health systems strengthening.

Dlorah holds a PhD in International Conflict Management from Kennesaw State University; a master’s degree in Public Health from

	<p>Georgia State University; and a B.S. in Science, Technology, and Culture from Georgia Tech.</p>
 	<p><b>Panellists:</b> Florian Doerr and Thales Augusto M. Penha (ICDD)</p> <p>Doerr is executive manager of the International Center for Development and Decent Work (ICDD) a global multidisciplinary network of nine partner universities on four continents, with its head office at the University of Kassel (Germany).</p> <p>He holds an MA in Global Political Economy from the University of Kassel, and his areas of research and work include nutrition and food systems, decent work, food loss and waste, and Indigenous Peoples food systems.</p> <p><b>Thales Augusto M. Penha</b> is assistant professor at the Department of Economics, Federal University of Rio Grande do Norte, Brazil. He received his PhD in economic development from the Institute of Economics of the University of Campinas (Unicamp). He has developed his area of research around the issues of governance of the agricultural markets, specifically on the aspects of global agricultural production supply chains of fresh fruits and their socioeconomic impacts in the northeast region of Brazil.</p>